

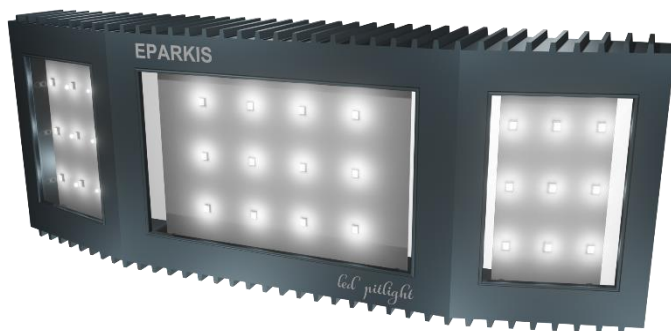


TECHNICAL SPECIFICATIONS – 18W LED Pitlight @ 48V AC

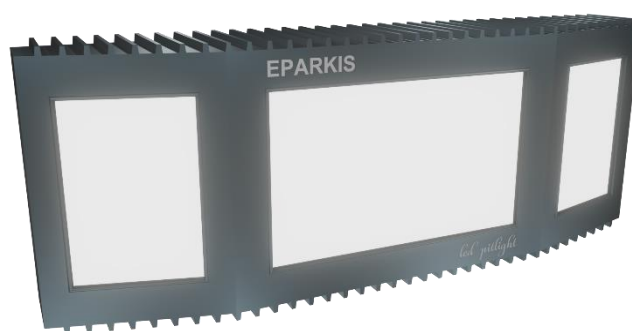
- ✚ Best in class LED with high level of efficiency >130 Lu/W, and colour rendering.
- ✚ Environment Friendly.
- ✚ Glare free light
- ✚ Pressure Die casted Aluminium housing.
- ✚ Constant Current LED driver (Isolated).
- ✚ Surge Protected.
- ✚ Suitable for outdoor application.

Available in 6500⁰K Cool white, 3000⁰K Warm White, and with tuneable change from white to yellow with intensity control.

Light Source	:	LEDs 9V, 1W. (2835)
LED make	:	Nichia/Osram/Seoul/Lumileds/Cree/Samsung
LEDs Bin Used	:	130 to 140 Lumens / Watt
Product Type	:	Indoor / Outdoor.
System's Wattage	:	18W
Driver	:	Constant Current
Input Voltage Range	:	40V – 72V, AC-50Hz
Power Factor	:	≥ 0.95
%V THD	:	≤ 10.
Surge Protection (Inbuilt)	:	≥ 3.5kV.
LED colour temperature	:	5500 ⁰ K to 6500 ⁰ K (Cool white).
Lumen Output	:	2400 Lumens through glass.
CRI	:	≥ 70
Beam Angle	:	Diffused / 120 ⁰
Driver Type	:	Isolated
Efficiency of driver	:	≥ 85%
LM-80	:	Yes
IP Rating	:	IP-66
Impact Resistance	:	IK-10
Working Temperature	:	-10 ⁰ C to +50 ⁰ C
Mechanical Dimensions	:	L- 370mm x W-130mm x H-55mm. ± 5mm



Pit light with toughen glass



Pit light with diffuser